

---

# Archon, we need to talk...

---

Nat Wilson  
Digital Archivist  
Carleton College

---

5/20/2015

# Where we are now

---

Archon users since 2011

Brought together many of our holdings

Still a patchwork of systems

- CONTENTdm
- ArcaSearch

Feeling the pinch

---

# Archival Discovery And Management (ADAM) Task Force

---

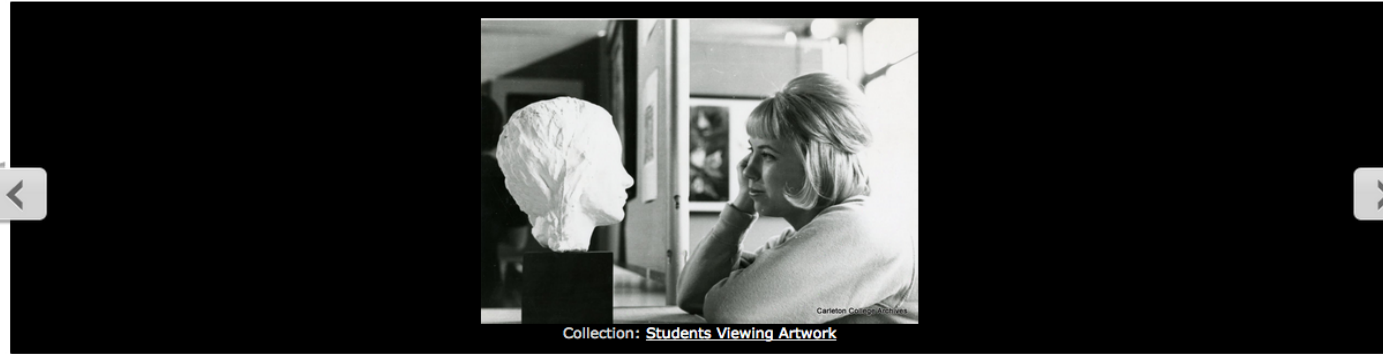
2010-2011

Evaluated

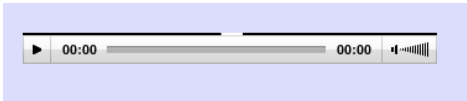
- Archon
  - Cuadra's Star Knowledge Center
  - Eloquent Systems
  - ICA-AtoM
  - Collective Access
  - Proficio
  - PTFS
-

# Criteria - customizable

---



Sample images from this set: [Athletics: Gymnastics](#)



# Criteria for Selection - online

---



# Criteria for Selection - ease of use

---



# Balance of control and flexibility

---

50,000 records

- 20 different FileMaker inventories
- 47 finding aids in Word
- Numerous schemas
- Unstructured data
- Inconsistent data



 [Browse:](#)[Collections](#)[Digital Content](#)[Subjects](#)[Creators](#)[Record Group](#)

Location: Archon

## XYZ Manuscript Repository

### Default Behaviors

- The search engine looks for records containing every term you submit.

### Search By Phrase

- Use double quotes around your search query. (e.g "Festival of Contemporary Arts")

### Narrow Your Search Results

- Use a minus sign before a term you want to omit from your results. (e.g. 'bass -fish' finds bass guitars but not bass fishing.)
- Browse by collection title, subject, name, or classification.

[Log In](#) [Register](#)[Contact Us:](#) [Email Form](#)

Page Generated in: 0.077 seconds (using 39 queries).  
Using 4.88MB of memory. (Peak of 4.99MB.)

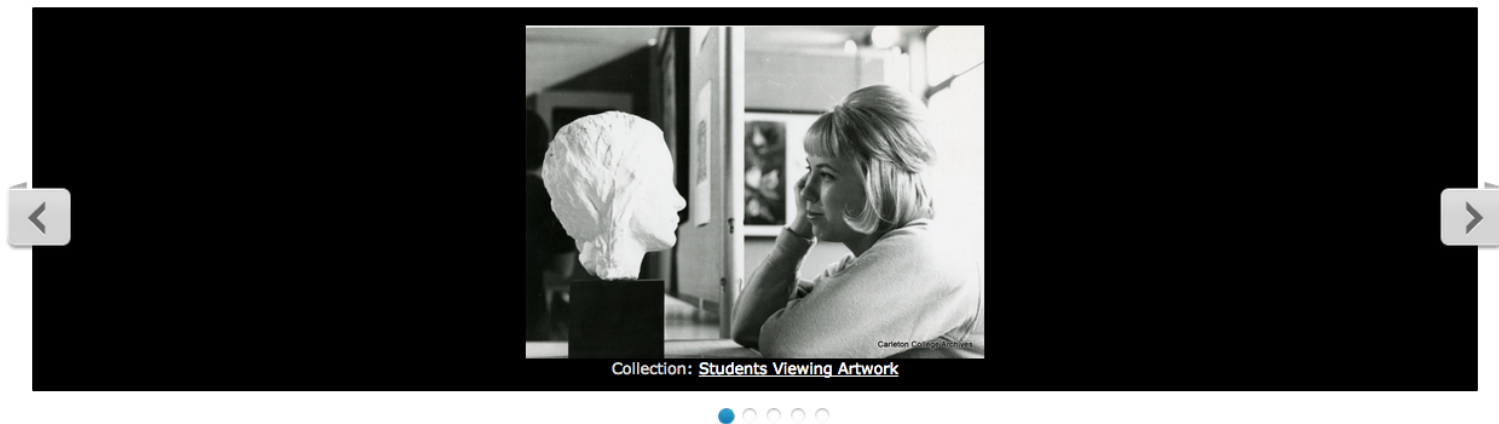
Powered by [Archon](#) Version 3.21  
Copyright ©2011 [The University of Illinois at Urbana-Champaign](#)



 [Browse:](#)[Categories](#)[Scans](#)[Creators](#)[A-Z](#)

Location: Archon

## Carleton College Archives



### Newest Content Added

- [Series 6: Other Individual Interviews](#) → [Item 1: Chude Allen, 2015](#) Added to collection: [Recordings - Oral History, 1971-2014](#)
- Collection: [Skin Deep](#)
- Collection: [Framed or mounted images and documents](#)
- [Series 5: Items 2001 - 2014](#) → [Item 2481: American Idealism / 2001 - 2014](#) Added to collection: [Publications \(non serial\) and Reports, 1956-2014](#)



14118\_001.tif



14119\_002.tif



14120\_003.tif



14121\_004.tif

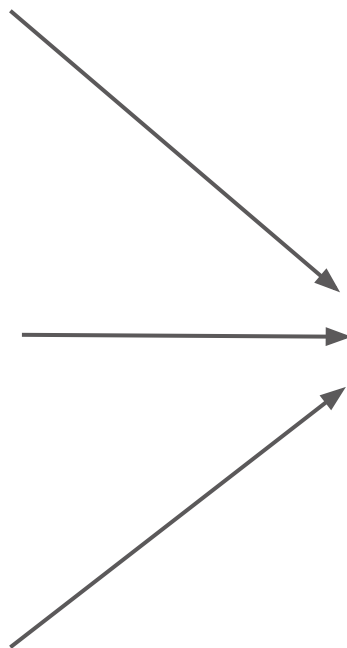


14122\_003.tif

...



N.tif



## ibnails | Carleton College Archives

Browse:

Categories

Scans

Creators



Two skeletons on ...



Two skeletons rid...



Two women



Unidentified stud...



View of campus fr...



View of Northfiel...

 [Search](#)[Browse:](#)[Categories](#)[Scans](#)[Creators](#)[A-Z](#)[Location: Archon](#) → [Photographs](#) → [Photographic Prints -- Gene...](#)

## Photographic Prints -- General, by Year, 1909/10 to present\_🌱 | Carleton College Archives

**Title:** Photographic Prints -- General, by Year, 1909/10 to present\_🌱

**ID:** 05/003

**Extent:** 100.0 Cubic Feet

[+ Administrative Information](#)

[+ Unprocessed Materials](#)

[Printer-friendly](#) | [Email Us](#)



Sample images from this set: [Athletics: Gymnastics](#)

[+ On-line Images/Records](#)

### [Detailed Description](#)

[Series 1: Circa 1909 to circa 1920](#)

[Series 2: Circa 1920 to circa 1930](#)

[Series 3: Circa 1930 to circa 1940](#)

[Series 4: Circa 1940 to circa 1950](#)

[Series 5: Circa 1950 to circa 1960](#)

[Series 6: Circa 1960 to circa 1970](#)

[Series 7: Circa 1970 to circa 1980](#)

 Search

Browse:

Categories

Scans

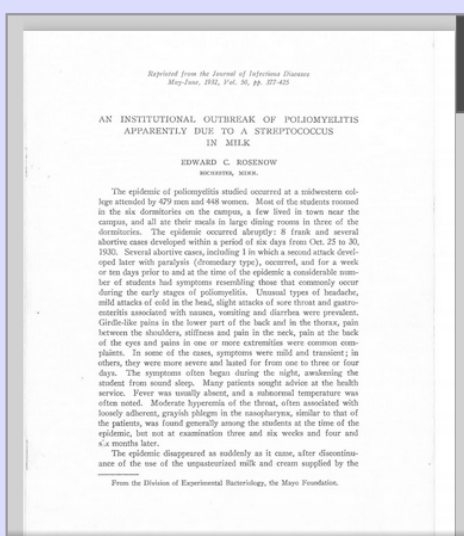
Creators

A-Z

Location: Archon → Digital Archives → An Institutional Outbreak of Poliomyelitis Apparently Due to a Streptococcus in Milk

## An Institutional Outbreak of Poliomyelitis Apparently Due to a Streptococcus in Milk | Carleton College Archives

Material presented here may only be samples from a larger set. Contact the [Carleton Archives](#) to inquire about additional items.



1369\_InstitutionalOutbreakPoliomyelitis.pdf (PDF)

**Title:** An Institutional Outbreak of Poliomyelitis Apparently Due to a Streptococcus in Milk**Date:** 1932**Description:** Report on a polio outbreak at Carleton College in 1930. The outbreak started due to unpasteurized milk produced at the Carleton dairy farm.

By Edward C. Rosenow of the Mayo Clinic

**ID:** 20120712\_2\_InstitutionalOutbreakPolio**Repository:** Carleton College Archives**Found in:** [Publications \(non-serial\) and Reports, 1856-2014](#) → [Series 2: Items 501-1000](#) → [Item 652: An Institutional Outbreak of Poliomyelitis Apparently Due to a Streptococcus in Milk / Edward C. Rosenow, 1932](#)

Chrome File Edit View History Bookmarks People Window Help Tue 11:40 AM

https://archivedb.carleton... Twin Cities Archives Round Table | archivists talking about archiving it/content?id=76514&q=farm+house

Log In | Contact Us | View List (3)

farm house Search

Location: Archon → Digital Archives → Early 1970s residents of Farm House, at reunion - Oral history interview

## Early 1970s residents of Farm House, at reunion - Oral history interview | Carleton College Archives

Material presented here may only be samples from a larger set. Contact the [Carleton Archives](#) to inquire about additional items.

1FarmHouseGroup\_2009\_06\_20\_SideA.mp3 (MP3 Audio)  
[Download File](#)

2FarmHouseGroup\_2009\_06\_20\_SideB.mp3 (MP3 Audio)  
[Download File](#)

**Title:** Early 1970s residents of Farm House, at reunion - Oral history interview  
**Date:** 2009  
**Description:** Interviewer: Sosted, Judy. Narrator: Farm House Group. See collection from this record for any additional information on this recording.  
**ID:** 20120509\_2809\_76514\_farmhouse  
**Repository:** Carleton College Archives  
**Found in:** [Recordings - Oral History, 1971-2014](#) → [Series 8: Group Interviews on Focused Topics](#) → [Item 8: Farm House Group, 2009](#)

0878\_002.jpg 0878\_012.jpg logo.gif Netscape\_Logo\_by\_A...png Confirmation-200579.pdf 2015-05-07 R&I Min....pdf Show All

Macintosh HD  
Windows7  
COLLA8  
HOME  
ARCHIVES  
UnitIDTemplate.xlsx  
accession  
carletonianFiles2001-2006  
Sportsphotos2000-2005 2  
20141124\_wellston eCollection

[Browse:](#)[Categories](#)[Scans](#)[Creators](#)[A-Z](#)

Location: [Archon](#) → [Digital Archives](#) → [Rotblatt interview and game footage.](#)

## Rotblatt interview and game footage. | Carleton College Archives

Material presented here may only be samples from a larger set. Contact the [Carleton Archives](#) to inquire about additional items.



Rotblatt\_Video1966\_1968.m4v (MPEG Video)

[Download File](#)

**Title:** **Rotblatt** interview and game footage.

**Date:** 1966; 1968

**ID:** 20130820\_RotblattStatsHistory/data/originals/gameInterview

**Repository:** Carleton College Archives

**Found in:** [Recordings of speeches, events, reunions and music performances performed by or at Carleton., 1930-2009](#) → [Series 21: Television coverage](#) → [Sub-Series 1966:1968](#) → [Item 1: Marvin \*\*Rotblatt\*\* Interview and News Footage for WCCO, 1966, 1968](#)

# When times are good, they're really good

---

Flexibility

Custom built tools work well

Minutes to learn, a lifetime to master.

Google-able

---

# But when times are bad...

---

Several problems with Archon.

- Full text searching.
  - Bugs
    - Authority files for creators and subjects.
    - Searching across multiple user defined fields.
  - Lack of reporting options
  - Slow loading.
  - Customization not part of core code.
    - Especially handling of digital content
-



# Searching multiple custom fields

---

## Item 1: Walter J. Clark, 1999

Class of 1924

Arrangement: Box 9, 1c

Date(s): 6/19/1999

Estimated Run Time: 1 hour

Interviewer: Donnell, Zoe

Narrator: Clark, Walter J.

Original Format: Audio cassette

Related Collections ID: 06/01/R4

Subjects: Student life; Social norms

Transcript: Draft Available

Use Restrictions: Unrestricted

---

# Time to go our separate ways?

---

- Fix Archon
  - Paid contracted programmer
- Move to a new system
- Either way new task force in summer or fall

# Some priorities

---

User experience

Web based

Customizable

Discoverable through other means

---

# Nat Wilson

---

Digital Archivist

Carleton College

[nwilson@carleton.edu](mailto:nwilson@carleton.edu)

507.222.4265

---

---

# Photo Credits

"Netscape logo" By Netscape Corporation (Netscape) [Public domain], via Wikimedia Commons. [http://commons.wikimedia.org/wiki/File:Netscape\\_logo.svg](http://commons.wikimedia.org/wiki/File:Netscape_logo.svg)

"Logo Google 2013 Official" By Google Inc (Google product logos) [Public domain], via Wikimedia Commons. [http://commons.wikimedia.org/wiki/File:Logo\\_Google\\_2013\\_Official.svg](http://commons.wikimedia.org/wiki/File:Logo_Google_2013_Official.svg)

---